

GREAT LAKES YACHT CLUB

2018

FALL SERIES SAILING INSTRUCTIONS

FLAG OFFICERS

Commodore	Alan Taub
Vice Commodore	Larry Delargy
Rear Commodore	Charles Fishman
Secretary	Cindy Porter

DRYA ADVISOR & PROTEST CHAIRPERSON

Com. Ed Theisen

PRINCIPAL RACE OFFICER

Com. Paul Krietsch

RACE COMMITTEE

Jim Rapelje (Co-Chairman) Com.	Paul Krietsch (Co-Chairman)
Com. Dave Parkes	Com. Mike McGuire
Com. Barney Mathie	Steve Haley
	Jeff Golding

Com. Ed Theisen Trophy Race & Races 2 through 5 - Monitor Channel 71 – W/L Race #1 – Monitor Channel 72

- 1. RULES** – Great Lakes Yacht Club (GLYC) is the Organizing Authority (OA) for the 2018 GLYC Fall Series. This regatta is governed by the Racing Rules of Sailing 2017-2020 (“RRS”).
- 2. ENTRIES** – Eligible Competitors may enter by delivering a completed entry form and with entry fee to Great Lakes Yacht Club, 23900 Jefferson Ave., St. Clair Shores, MI 48080, 586.778.9510 by September 28, 2018.
- 3. AGREEMENT TO ASSUME RISK** – In consideration of being permitted to enter this regatta and being fully knowledgeable of the risks of sailing as a competitive sport, all competitors, crew members and guests aboard voluntarily assume all risks associated with participating in this regatta. Competing boats shall in all respects be ready for sea and sailed by an adequate and capable crew. It shall be the sole and inescapable responsibility of the skipper and crew of the boat to decide whether to start or continue a race. The skipper must assure that all equipment required by the United States Coast Guard, as well as other necessary safety equipment, is aboard and properly maintained and stowed and that the crew knows where it is kept and how it is used. Due to the potential of sailing in international waters, it is strongly recommended that all persons on board possess appropriate identification to satisfy an inquiry from any law enforcement agency.
- 4. INTERFERENCE WITH COMMERCIAL SHIPPING** – Boats are required to stay clear of all Commercial Shipping Traffic, including Tug/Barge Combinations, Lakers and Commercial Passenger Vessels. In addition, boats crossing the shipping channel (see U.S. Chart #14850), are forbidden to interfere with major ships (Federal law 89-764). No restriction is placed on use of the water by other parties. Competitors therefore shall adhere to USCG Rule 18, which reads in part: “(b) A sailing vessel underway shall keep out of the way of: (ii) a vessel restricted in her ability to maneuver.”
- 5. TRASH DISPOSAL** – RRS 55 is changed to read as follows: A competitor shall not intentionally put trash in the water. However, discarding elastic or wool bands when setting a sail is permitted.

6. **IDENTIFICATION** – Boats should carry proper sail numbers on mainsails, spinnakers and any sails attached to the headstay that have a luff perpendicular exceeding 130% of the base of the foretriangle.

7. COURSES, MARKS and RACE DATES

a. **THE COM. ED THEISEN TROPHY RACE** – Race 1 – September 30th:

- i. The approximate location of the starting area is 42° 25.2' North, 082° 51.3' West.
- ii. **A GREEN** flag displayed on the Signal Boat – Marks to starboard -proceed to the ET Mark NW (N42°28.1'- W082°48.0) then to ET Mark SE (N42°29.8'- W082°50.6') then to the finish. Course length approximately 11nm. The starting line shall be between a staff displaying an orange flag on the Starting Line Signal Boat at the port end and a green inflated pyramid at the starboard end. Both ET Mark NW and ET Mark SE are 8" PVC vertical pipe. ET Mark NW is labeled 'N' and ET Mark SE is labeled 'L'. Locations are approximate. Boats shall finish from the direction of the last mark and between an orange flag on the Race Committee Signal Boat and a green inflated pyramid finish mark.
- iii. **A RED** flag displayed on the Signal Boat – Marks to port - proceed to ET Mark SE (N42°29.8'- W082°50.6') then to ET Mark NW (N42°28.1'- W082°48.0') then to the finish. Course length approximately 11nm. The starting line shall be between a staff displaying an orange flag on the Starting Line Signal Boat at the port end and a green inflated pyramid at the starboard end. Both ET Mark NW and ET Mark SE are 8" PVC vertical pipe. ET Mark NW is labeled 'N' and ET Mark SE is labeled 'L'. Locations are approximate. Boats shall finish from the direction of the last mark and between an orange flag on the Race Committee Signal Boat and a green inflated pyramid finish mark.

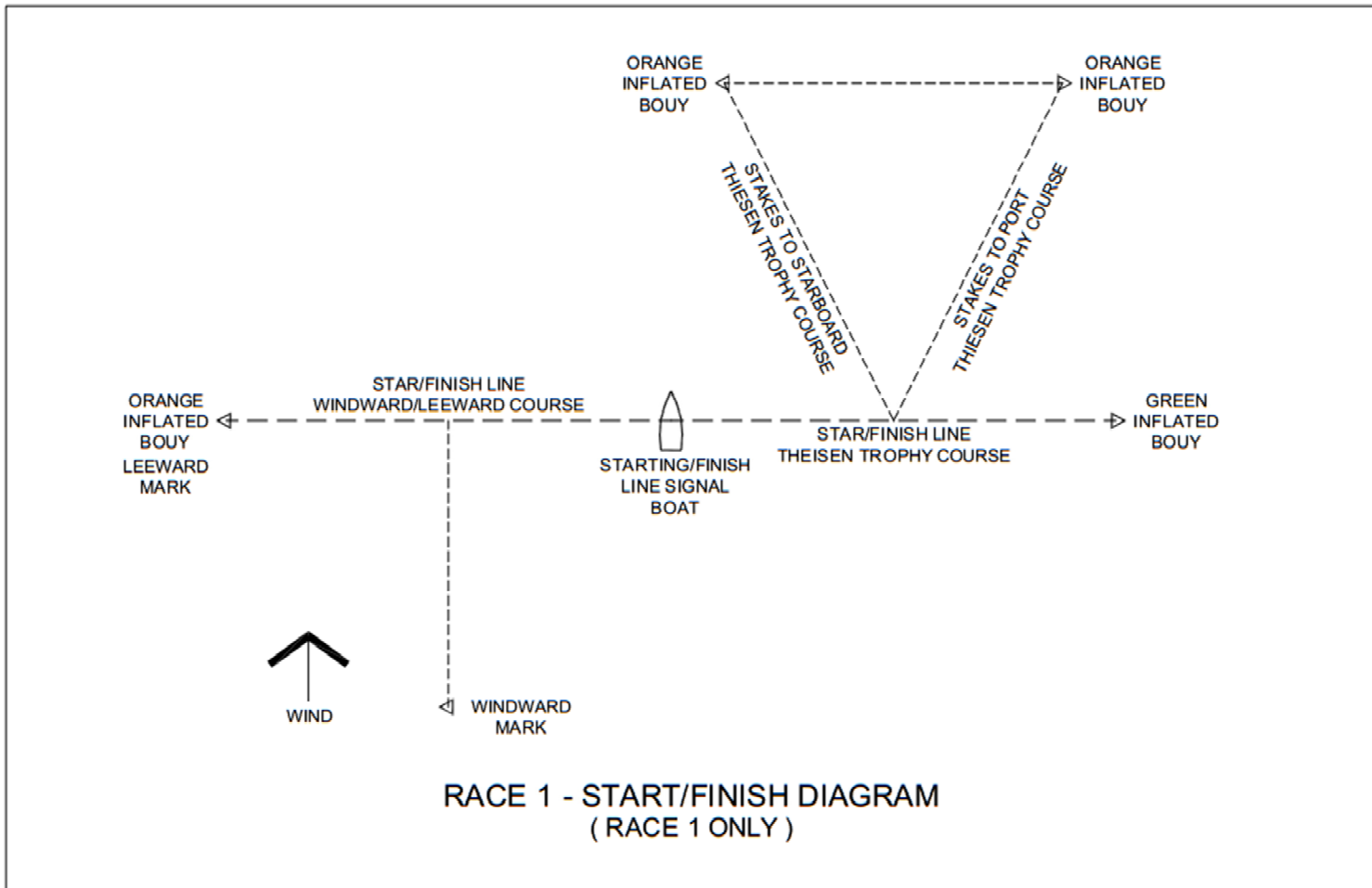
b. **WINDWARD/LEEWARD (W/L)** – (Race 1 – Sunday, September 30th) Races 2 to 5 – Sunday, Oct. 8, 15, 22 and Saturday, Oct. 28th (**The Oct. 28th Race includes prizes for the best Halloween Costumes, as judged by the Race Committee**):

- i. **COURSE LOCATION** – The approximate location is 42° 25.2' North, 082° 51.3' West (Center of DRYA 'A' Course Circle).
- ii. **COURSES LENGTH & MARKS** – The starting line signal boat shall display a placard(s) showing the number of legs, the approximate magnetic bearing and distance to the first mark prior to the warning signal for the start of the first class. All distances are approximate and in nautical miles (nm). Except as provided in Sailing Instruction 12, all rounding marks are orange inflated pyramids. All marks shall be rounded to port. The leeward mark will be an orange inflated pyramid at the port end of the starting line.
- iii. **STARTING AREA** –The Race Committee will establish an anchorage within the course circle approximately one hour before the warning signal for the first start. The RC will attempt to advise on channel 71 (Races 2 – 5 channel 71) (Race 1 – channels 71 and 72) of the lat/long position of the starting area at their earliest opportunity.
- iv. **START LINE** – The starting line shall be between a staff displaying a blue flag on the Starting Line Signal Boat at the starboard end and an orange inflated pyramid at the port-end.
- v. **FINISH LINE** – Boats shall finish from the direction of the last mark and between a blue flag on the Race Committee Signal Boat and an orange inflated pyramid finish mark.

8. **STARTING** – Races will be started using RRS 26. Race 1: The warning signal for the Theisen Trophy Race class or classes will be at 1055 hours. Race 1: The warning signal for the W/L classes will be at 1125 hours. Races 2 – 5 The warning signal for the first class will be at 1055 hours. Attention Signal – The Race Committee may make a series of short sound signals approximately one minute before the warning signal for the first class.

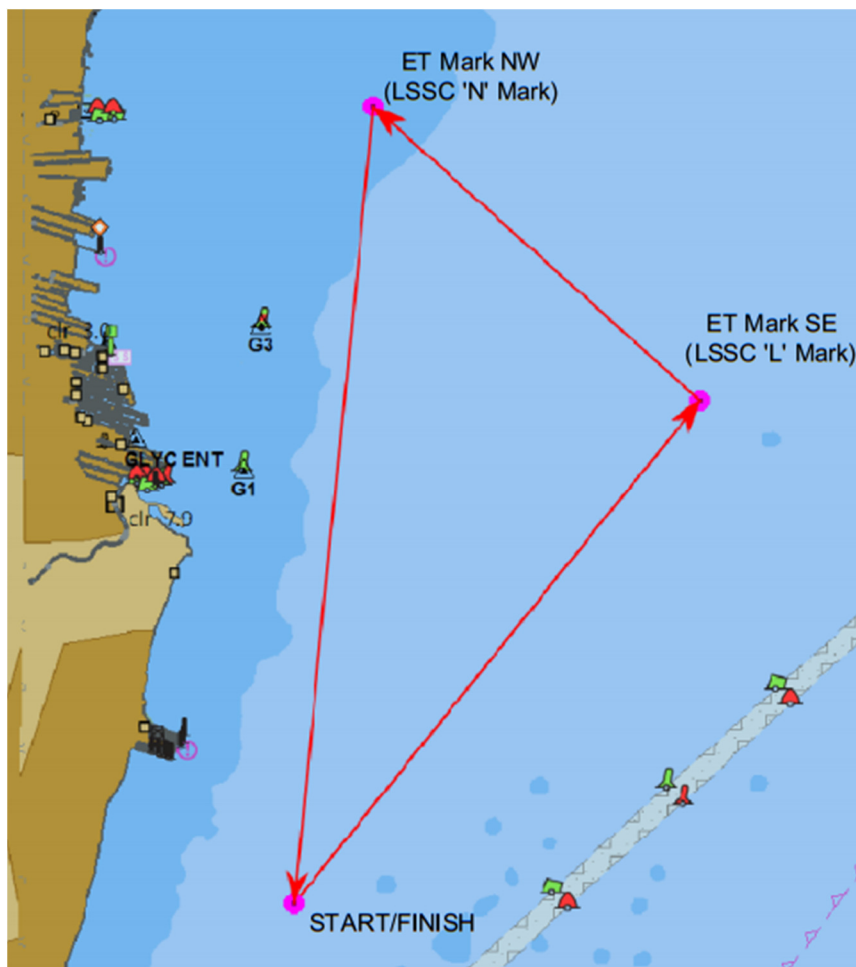
9. **ORDER, STARTING NUMBERS AND CLASS FLAG** – Will be shown on the ‘Fall Series Scratch Sheet’ which will be posted by September 28, 2018, 1600 hrs on the Official Regatta Notice Board located outside of the GLYC Office, and on the GLYC web site (greatlakesyc.com). Additional copies will be available in the GLYC clubhouse.
10. **NUMBER OF RACES** –The Race Committee may run two races when in its judgment conditions permit. If the Race Committee intends to start another race, it will display numeral pennant 5 (with no sound) while boats are finishing the earlier race. Boats starting a second shall not interfere with boats finishing a race.
11. **LIMIT MARKS** – One or more limit marks (a red and green buoy) may be set near the Starting Line Signal Boat and/or the Race Committee boat on station for starts and finishes. A boat shall not touch a limit mark or sail between a limit mark and the Signal Boat or Race Committee boat.
12. **INDIVIDUAL RECALLS** – In addition to signaling in accordance with RRS 29.1, the Race Committee may hail, and/or announce by VHF radio (channel 71 for the Theisen Trophy Course and Races 2 through 5) and VHF radio channel 72 for the Oct. 1, windward/leeward course, the sail numbers of boats subject to individual recall. The failure to do so, an incorrect or late hail or announcement or the order in which sail numbers are hailed or announced shall not be grounds for redress. This changes RRS 62.1.
13. **CHANGE OF COURSE AFTER ALL STARTS**– (a) A change of course will be signaled in accordance with RRS 33. The new mark will be yellow, but subsequent course changes will alternate between orange and yellow marks.
14. **TIME LIMIT**
 - a. Com. Ed Theisen Trophy Race (Race 1): The time limit (measured from the class starting signal) shall be three and a half hours (3.5) for each class.
 - b. Windward/Leeward Races (Races 2 to 5): The time limit (measured from the class starting signal) shall be two and a half hours (2.5) for each class.
15. **PROTESTS** – All written protests shall be delivered to the GLYC Race Committee at the GLYC club house within 2 hours of the finishing time of the last boat to finish. The Race Committee will inform the participants of the time and place of the Protest Hearing.
16. **SCORING** – PHRF Races will be scored using Time on Time. The series overall will be scored using time on time for all competitors, with the best of four races being scored using the Low Point System of RRS Appendix A. One race completed shall constitute a series. A DSQ may not be excluded from a boat's overall score.
17. **COURTESY BROADCASTS** – An unofficial designated observer may report all visual signals displayed by the Race Committee over the VHF channel 71. Information so reported is provided as a courtesy to competitors and does not alter the competitors' responsibility to observe the Race Committee's visual signals, which govern the conduct of the racing. Errors or omissions by the observer, or a competitor's failure to hear an observer's report, will not be grounds for granting redress.
18. **CHANGES TO THE SAILING INSTRUCTIONS** - The Race Committee may communicate changes to the SIs over VHF Channel 71 and/or verbally when Code Flag “L” is displayed on the Signal Boat and before that class' warning signal. Ref: Rule 90.2”. When SIs are amended the changes will be shown in RED on the revised document.

19. COURTESY BROADCASTS – An unofficial designated observer may report all visual signals displayed by the Race Committee over the VHF channel 71, for the Theisen Trophy Race and Races 2 through 5. An unofficial designated observer may report all visual signals displayed by the Race Committee over the VHF channel 72, for the Windward/Leeward Course (Race 1, September 30th). Information so reported is provided as a courtesy to competitors and does not alter the competitors' responsibility to observe the Race Committee's visual signals, which govern the conduct of the racing. Errors or omissions by the observer, or a competitor's failure to hear an observer's report, will not be grounds for granting redress.



Race 1 (Sept 30th) Course Diagram

COM. ED. THEISEN TROPHY RACE



Com. Ed Theisen Trophy Race				
Stakes to Port	Mark	Location	Bearing to Mark	Distance (NM)
	Start	42:25.2N * 82:51.3W		
	ET Mark SE	42:29.8N * 82:50.6W	46 Degs	3.8
	ET Mark NW	42:28.1N * 82:48.0W	319 Degs	2.6
	Finish	42:25.2N * 82:51.3W	193 Degs	4.7
Stakes to Starboard	Mark	Location	Bearing to Mark	Distance (NM)
	Start	42:25.2N * 82:51.3W		
	ET Mark NW	42:28.1N * 82:48.0W	13 Degs	4.7
	ET Mark SE	42:29.8N * 82:50.6W	139 Degs	2.6
	Finish	42:25.2N * 82:51.3W	226 Degs	3.8
Bearings are Magnetic and Locations are approximate				

**AFTER RACING JOIN US AT, THE
GLYC CLUBHOUSE FOR AWARDS.**

**There will be food (for purchase)
and complementary Soft Drinks (BYOB)**

**ENJOY A GREAT RACE SERIES
BEFORE THE SEASON ENDS**

**Great Lakes Yacht Club,
23900 Jefferson Avenue
St. Clair Shores, Michigan 48080
(586) 778-9510 greatlakesyachtclub@gmail.com
www.greatlakesyc.com**

