



DETROIT YACHT CLUB
1 Riverbank Road, Belle Isle
Detroit,
www.dyc.com
313-824-1200

2019 LEUKEMIA CUP DETROIT RIVER COURSE FRIDAY, MAY 17, 2019

RACING INSTRUCTIONS

1. **RULES & AUTHORITY** – For Sailboats the races will be governed by *The Racing Rules of Sailing 2017-2020 (RRS)*, the prescriptions of USSA, the FlyingScot FSSA Class Rules, and these Instructions. Kayaks and Standup Paddleboards are expected to participate safely and courteously and be governed by these Instructions.
2. **ELIGIBILITY & REGISTRATION**
 - A. The Sailboat race is open to Flying Scot class sailboats. The use of club-owned boats shall be governed by the club's established policies regarding eligibility and use of such boats.
 - B. Kayaks and Standup Paddleboards must be propelled by paddles and meeting the class specifications for the invited classes in these Sailing Instructions.
 - C. All Competitors must be registered for the 2019 Leukemia Cup Detroit River Course. **Registration instructions may be accessed on the Leukemia Cup link at www.dyc.com >Boating>Sailing Programs or www.greatlakesyc.com >Leukemia Cup**

THE REGISTRATION FEE FOR ALL CLASSES IS \$30
All registration fees are donations to the Leukemia & Lymphoma Society

3. **SIGNALS MADE ASHORE** . Signals made ashore will be displayed from the DYC Main Dock.
4. **SAIL & POLE LIMITATIONS**
 - a. Boats in the Flying Scots class may use any sail or pole permitted under RRS or the rules applicable to the class and any club-adopted rules regarding requirements for use of boats and sails.
 - b. **Kayaks and Standup Paddleboards** must be propelled by hand operated paddles and may not use sails or poles.

5. **CLASSES and STARTING TIMES** – A boat shall start only in the class to which it is assigned. The following are the starting times and signals:

FLYING SCOTS		
Time	Sounds	Visual Signal
1854 Hours	Attention Signal (5 Horn Short Signals)	
1855 Hours	Warning Cannon	FS Class Flag Up
1856 Hours	Preparatory Signal (Horn)	P Flag Up
1859 Hours	One Minute Signal (Horn)	P Flag Down
1900 Hours	Starting Cannon	FS Class Flag Down
BREAK		
RACING KAYAKS OVER 18' (MEN & WOMEN SEPARATE CLASSES WITH A COMBINED START)		
Time	Sounds	Visual Signal
1914 Hours	Attention Signal (5 Horn Short Signals)	
1915 Hours	Warning Cannon	Placard #1 Up
1917 Hours	One Minute Signal (Horn)	
1918 Hours	Starting Cannon	Placard #1 Down
RACING KAYAKS 15'-18' RACING STANDUPS 12'6" AND OVER (MEN & WOMEN SEPARATE CLASSES WITH A COMBINED START)		
Time	Sounds	Visual Signal
1918 Hours	Warning Cannon (Coincides with Prior Start)	Placard #2 Up
1920 Hours	One Minute Signal (Horn)	
1921 Hours	Starting Cannon	Placard #2 Down
MEN AND WOMEN COMBINED CLASSES RECREATIONAL KAYAKS 15' AND UNDER & RECREATIONAL STANDUPS UNDER 12'6"		
Time	Sounds	Visual Signal
1921 Hours	Warning Cannon (Coincides with Prior Start)	Placard #3 Up
1923 Hours	One Minute Signal (Horn)	
1924 Hours	Starting Cannon	Placard #3 Down

6. **STARTING & FINISHING LINE** - The starting and finishing line shall be between the staff of a flag with the blue and white letters "RC" and an orange sleeve displayed from a piling on the Main Dock "T" and the upstream water edge of a mark (Orange Tetrahedron - "Starting Line Mark") approximately 100 yards to the north.

SEE THE ATTACHED COURSE CHARTS FOR ALL SAILING AND PADDLING COURSES

7. **KAYAKS AND STANDUP PADDLEBOARDS SHALL USE THE KAYAK COURSE.**

**THE FOLLOWING INSTRUCTIONS
8 THROUGH 15 APPLY ONLY TO THE FLYING SCOT CLASS**

8. **SAILING COURSES** - The courses to be sailed are described and illustrated in Course Diagrams Appendix to these Sailing Instructions. **Note that boats, with the exception of Kayaks and Standups will start going *upstream*.** Race Committee will display lettered placards from the Main Dock end of the Starting Line designating the course to be sailed. The following indicates the possible course designations:

<u>Letter(s)</u>	<u>Course to be sailed</u>
BL	Bayview Long Course
BS	Bayview Short Course *
EL	Edison Long Course
ES	Edison Short Course *

NOTE

* The difference between the Long and Short Courses is only that boats sailing the Long Courses proceed past the Roostertail Can, leaving it to port to a Mark on the Detroit side of the River and then across to a mark on the DYC side of the River and through the finish proceeding upstream, passing the Starting Line Mark to port.

However, due to the River current and light winds, the Short Courses may be used and in that case, boats pass the Roostertail Can, leaving it to port and then directly to the finish line, proceeding downstream, passing the Starting Line Mark to starboard.

Flying Scot skippers are directed to use caution in approaching the start/finish line and remain vigilant for Kayak and Standup Paddleboard traffic on the race course

9. **SHORTENED COURSE** . If a committee boat is positioned near a mark of the course displaying a “**S**” **Shape, Placard or Flag (White with Blue square) with two sounds**, all boats are to round that mark leaving it on their port side and proceed directly to the Finish Line. Boats are to finish downstream in the opposite direction as they started, passing the Starting Line RC Flag on the dock to port and the Starting Line mark to starboard.
10. **POSTPONEMENT**
- a) In the event of a Postponement Ashore due to weather conditions or other circumstances, the Race Committee will display an Answering Pennant (AP) (pennant with vertical red and white stripes or a cylindrical shape with vertical red and white stripes), accompanied by two guns or other sound signals both at the Zerbe Sailing Center near the DYC Flying Scot Dock and the Starting Area at the river end of the DYC Main Dock. An AP for a Postponement Ashore will be displayed no later than 1840 hours. **The Warning Signal for Racing will be displayed no sooner than 10 minutes after the AP for the Postponement Ashore is lowered.**
- b) In the event of a Postponement on the Water, the AP signal will be displayed from the Starting Area only accompanied by two guns or other sound signals. The AP signal will be lowered (accompanied by a sound signal) approximately one minute before next signal is displayed which shall be either: (1) the Warning Signal for the start and therefore the restarting of the sequence or (2) an abandonment signal in accordance with Paragraph 11 of these instructions.
11. **ABANDONMENT** - Flag "N" or a cylindrical shape, accompanied by *three* guns or other sound signals, means: “*All races are abandoned, no more racing today.*” If a competitor abandons or withdraws from a race under her own volition, the retiring boat is to inform the Race Committee of her withdrawal as soon as possible.
12. **TIME LIMITS** . The RRS 35 is hereby modified as follows. If no boat finishes the course within 90 minutes of her start, the race shall be deemed abandoned. If one boat in a class finishes within the applicable 90 minutes, the race shall stand for all other boats in her class, however any boat that has not finished within 30 minutes of the of the finish of the first boat will be scored DNF.

13. **RADIO MONITORING** . For safety reasons on the race course, all sailboats are requested, but not required, to have a VHF radio and monitor VHF channel 68, while on the water.
14. **PENALTIES** . The RRS 44.1 is hereby modified as follows. A boat may take a One-Turn Penalty when she may have broken one or more rule of Part 2 in an incident while racing. A boat which has broken rule 31 (Touching a Mark) must re-round that mark.
15. **PROTESTS** . Protests will be handled in accordance with the RRS. A protesting boat is to notify the Race Committee by hailing or by radio of their intention to protest within 15 minutes of their crossing the finish line or retiring from the race. The time limit for submitting a written protest to the Race Committee shall be 60 minutes after the protesting boat has notified the Committee of the intention to protest. Protests are to be filed at the DYC Reception Counter - Main Lobby and with the PRO for the day. Protest hearings shall be held as indicated in the GLYC Leukemia Cup Sailing Instructions for May 18, 2019.

**THE FOLLOWING INSTRUCTIONS
16 THROUGH 19 APPLY TO ALL CLASSES**

16 AWARDS

First, Second and Third Place Flags will be awarded for participants in each class.

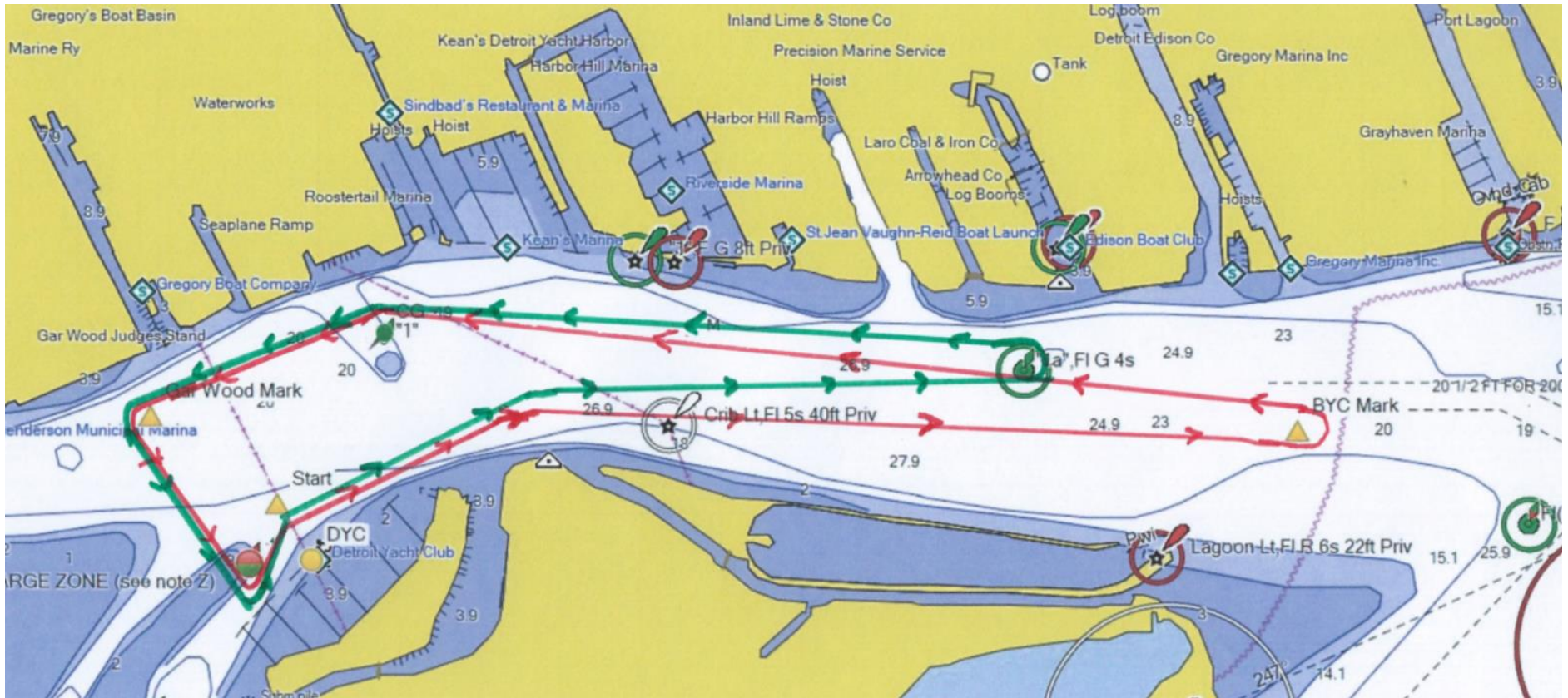
Awards for the Sailing, Kayak and Paddling Classes will all be presented at Detroit Yacht Club on Friday, May 17, 2019 following the races at the Post Race Party in the Detroit Yacht Club Bitter End Room.

17. **ASSUMPTION OF RISK** - By participating in this race, each person aboard as skipper, crew or otherwise (a) acknowledges that racing has certain inherent risks and can be a dangerous activity and (b) nevertheless voluntarily assumes all such risks, and waives any and all claims that he or she may have for damages of any kind against the DYC, it's race committee or any officer, director, member, employee or agent of the DYC, arising out of or related to his or her participation in any such race. The skipper and crew shall be responsible for deciding whether to start or to continue to race.
18. **SAFETY** . Any boat participating in the race shall be seaworthy in hull, rigging and gear and operated by one or more person(s) competent to participate in an event of this kind. All participants are strongly encouraged to wear Personal Floatation Devices (PFDs) during this event.
19. **SAFETY EQUIPMENT** - The skipper of a participating boat acknowledges that he or she is aware of the safety equipment required by the United States Coast Guard to be carried aboard the boat and accepts full responsibility for deciding what additional safety equipment is necessary for the safety of the boat and crew under the circumstances. Although failure to adhere to this requirement is not protestable in this race, the skipper shall insure that all such required and additional equipment will be aboard, in accessible locations and in good working order, and the skipper shall assure that each member of the crew and any others aboard during this race know the location and proper use of all such equipment.

**SEE THE ATTACHED COURSE CHARTS FOR
ALL SAILING AND PADDLING COURSES**

Leukemia Cup Detroit River Sailboat Long Courses

May 17, 2019

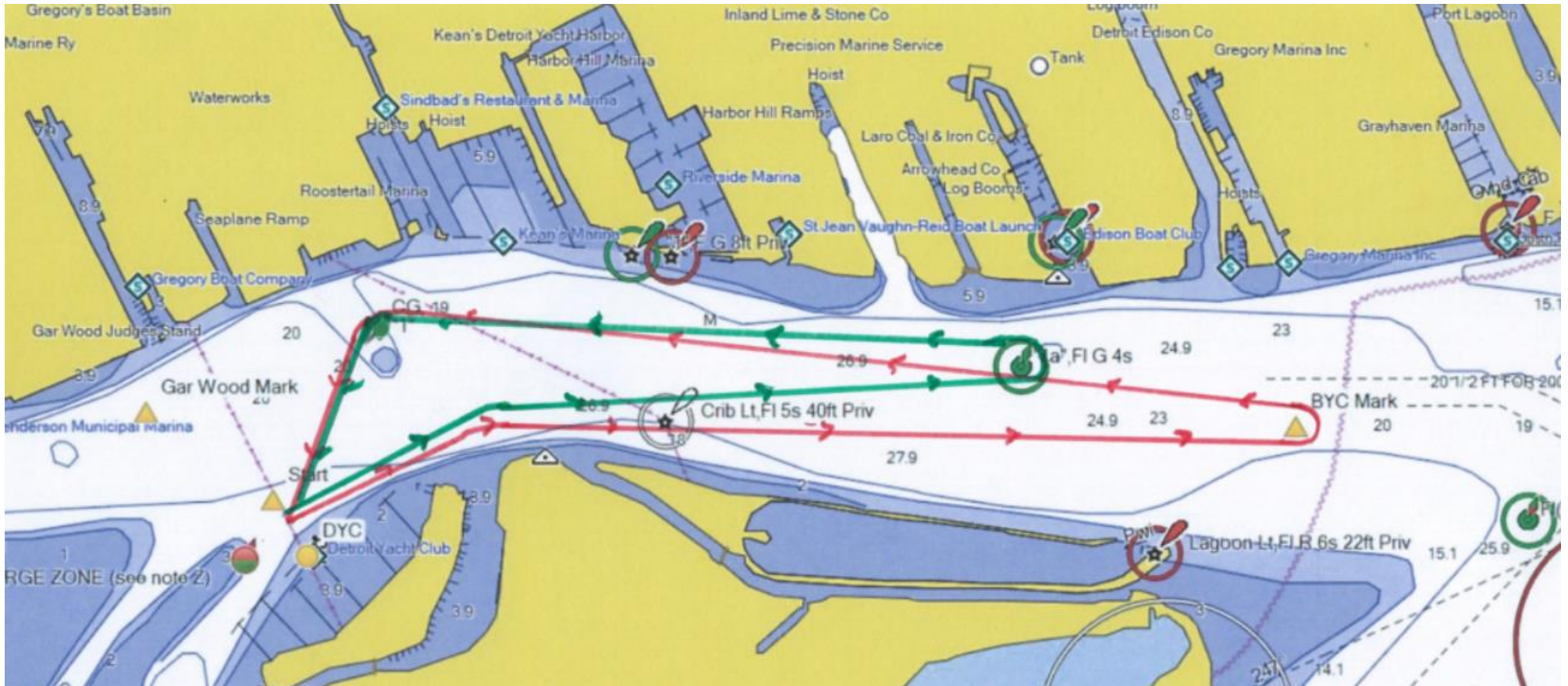


Bayview Long (Red Track) From the **Starting Line** (passing between an Orange Mark on Main Dock and an Orange Tetrahedron in the water) upstream, passing the Old Water Intake to either side, thence to an **Orange Tetrahedron** (approximately .2 NM South of Bayview Yacht Club), leaving it to Port, thence downstream to **Green Can CG1** near the Roostertail, leaving it to Port, thence continuing downstream to an **Orange Tetrahedron** near the Gar Wood Judges Stand, leaving it to Port, thence to a **Red/Green Buoy** near West End Dock, leaving it to Port and thence to the **Finish**, crossing it upstream. Neither the Old Water Intake nor Green Buoy G1a off Edison Boat Club are marks of the course.

Edison Long (Green Track) - From the **Starting Line** (passing between an Orange Mark on Main Dock and an Orange Tetrahedron in the water) upstream, passing the Old Water Intake to either side, thence to **Green Buoy G1a** off Edison Boat Club, leaving that to Port, thence downstream to **Green Can CG1** near the Roostertail, leaving it to Port, thence continuing downstream to an **Orange Tetrahedron** near the Gar Wood Judges Stand, leaving it to Port, thence to a **Red/Green Buoy** near West End Dock, leaving it to Port and thence to the **Finish**, crossing it upstream. The Old Water Intake is not a mark of the course.

Leukemia Cup Detroit River Sailboat Short Courses

May 17, 2019



Bayview Short (Red Track) From the **Starting Line** (passing between an Orange Mark on Main Dock and an Orange Tetrahedron in the water) upstream, passing the Old Water Intake to either side, thence to an **Orange Tetrahedron** (approximately .2 NM South of Bayview Yacht Club), leaving it to Port, thence downstream to **Green Can CG1** near the Roostertail, leaving it to Port, then to the Start/Finish Line, finishing downstream in the opposite direction of the start. Neither the Old Water Intake nor Green Buoy G1a off Edison Boat Club are marks of the course.

Edison Short (Green Track) - From the **Starting Line** (passing between an Orange Mark on Main Dock and an Orange Tetrahedron in the water) upstream, passing the Old Water Intake to either side, thence to **Green Buoy G1a** off Edison Boat Club, leaving that to Port, thence downstream to **Green Can CG1** near the Roostertail, leaving it to Port, thence to the Start/Finish Line, finishing downstream in the opposite direction of the start. The Old Water Intake is not a mark of the course.

2019 Leukemia Cup Detroit River Kayak Course Instructions

Designated Classes

- *Men's Racing Kayaks – Over 18' Length*
- *Men's Racing Kayaks – 15' to 18' Length*
- *Women's Racing Kayaks – Over 18' Length*
- *Women's Racing Kayaks – 15' to 18' Length*
- *Men's Racing Standup Paddleboards – 12'6" Length and Over*
- *Women's Racing Standup Paddleboards – 12'6" Length and Over*
- *Men & Women Combined Recreational Kayaks – 15' Length or Under*
- *Men & Women Combined Recreational Standup Paddleboards – Under 12'6" Length*

Starting Sequences

All Classes

- Horn Attention Signals (Five Short) 1914 Hours (7:14pm)

Mens' and Womens' Racing Kayaks Over 18' (Combined Start)

- Warning Cannon 1915 Hours (7:15pm)
- One Minute Long Horn Signal 1917 Hours (7:17pm)
- Starting Cannon 1918 Hours (7:18pm)

Mens' and Womens' Racing Kayaks 15'to 18' and Mens' and Womens' Racing Standup Paddleboard Classes (Combined Start)

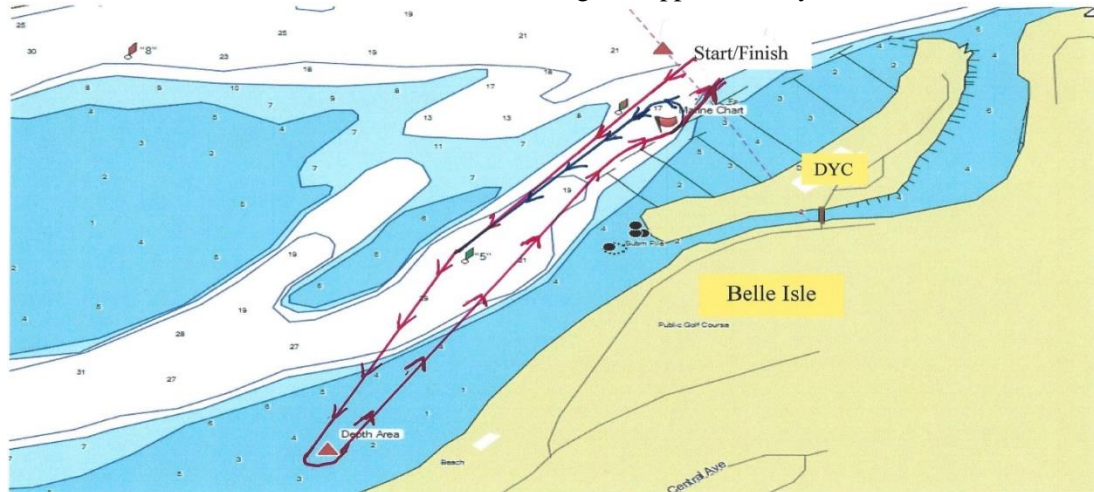
- Warning Cannon (Coincides with Prior Start) 1918 Hours (7:18pm)
- One Minute Horn 1920 Hours (7:20pm)
- Starting Cannon 1921 Hours (7:21pm)

Kayak Recreational Class and Recreational Standup Paddleboard Classes (Combined Start)

- Warning Cannon (Coincides with Prior Start) 1921Hours (7:21pm)
- One Minute Long Horn Signal 1923 Hours (7:23pm)
- Starting Cannon 1924 Hours (7:24pm)

Course

Start between an orange sleeve displayed from a piling on the Main Dock "T" and an inflated orange tetrahedron approximately 100 yards from the dock. Proceed downstream, passing Green Can #5, leaving it to your Port side and continue to an inflatable orange tetrahedron near the Belle Isle Bathing Beach, leaving it to your Port as you round it and proceed back upstream back to the Start/Finish line. The Course length is approximately one nautical mile.



Recreational Class Kayaks and Standup Paddleboards will complete one lap. All Racing Class competitors will complete two laps unless the committee shortens the course to one lap based on weather and wind conditions. The course length will be announced before the start.

For those participating in a second lap, round the orange flag on a small buoy near DYC Slab Dock, leaving it to Port and repeat the course to the Start/Finish line

First, Second and Third place flags will be awarded to for each class.