

GREAT LAKES YACHT CLUB



proudly presents the



33rd ANNUAL 1+1 REGATTA & 31st ANNUAL SINGLE-HANDED REGATTA

SUNDAY, June 9, 2019

GLYC FLAG OFFICERS

Commodore	Larry Delargy
Vice Commodore	Charles Fishman
Rear Commodore	Cindy Porter

RACE COMMITTEE

James Rapelje, Co-Race Chair	
Com. Paul Krietsch, Co-Race Chair	
Com. Barney Mathie	Com. Dave Parkes
Com. Frank Stellingwerf	Stephen Haley
Jeff Golding	Com. Mike McGuire
Werner Eckardt	



Sailing Instructions

Sailing Instructions

RULES AND MANAGEMENT: Great Lakes Yacht Club (GLYC) is the Organizing Authority (OA) for the 33rd Annual 1+1 Regatta & the 31st Annual Single-Handed Regatta. The Regatta will be governed by the rules as defined in the Racing Rules of Sailing for 2017-2020 (RRS).

NOTICES TO COMPETITORS Notices to competitors will be posted on the official regatta notice board located next to the office in the GLYC clubhouse and at www.greatlakesyc.com, under "1+1 Regatta".

CHANGES IN SAILING INSTRUCTIONS: Changes in sailing instructions, class splits and starting times will be posted by 1700 hours on Friday, June 7, 2019. Class splits will also be available at www.greatlakesyc.com, under "1+1 Regatta".

ENTRY: This regatta is open to all sail yachts whose owners hold membership in GLYC and to other yachts upon invitation of the Race Committee. Eligible yachts shall be registered with the Race Committee by completing the registration form and submitting it with the appropriate race fees in accordance with the registration application instructions. Registration form is available at www.greatlakesyc.com, under "1+1 Regatta"

SCHEDULE OF RACES: The warning signal for the first class will be at 1055 hours. The Race Committee may make a series of short sound signals approximately one minute before the warning signal of the first class.

STARTING SEQUENCE: Classes will start in the order they are listed under class splits on the official notice board. The Class Flag for each class will be designated by numbers 1, 2, 3, 4 etc. that correspond to the class splits.

AGREEMENT TO ASSUME RISK: In consideration of being permitted to enter this regatta and being fully knowledgeable of the risks of sailing as a competitive sport, all contestants voluntarily assume all risk associated with participating in this event. It shall be the sole and inescapable responsibility of the skipper of the yacht to decide whether to start, to continue or finish the race. The skipper must assure that all safety equipment is properly maintained and stowed and know how to use same.

CREW: Yachts registered in the 1 + 1 classes shall be manned by two (2) adequate and capable crew, single handing is not permitted. Yachts registered in the single hand classes shall be manned by a single adequate and capable sailor. However, an additional person designated as "**Press**" may be aboard but may **not** perform any function that improves that boat's performance during the race. The decision that the crew is adequate and capable is the sole responsibility of the skipper of each yacht; the Race Committee, however, reserves the right to exclude boats which in their judgment are not adequately manned.

IDENTIFICATION: Yachts shall carry sail numbers on mainsails, spinnakers, and sails attached to the head stay which equal or exceed 130% of the "J" measurement. Any yacht that does not have sail numbers on its sails must display her sail number on a white background with black numerals that are at least 18 inches high and visible from both sides of the yacht. Yachts without proper display of sail numbers may be subject to protest.

MEASUREMENT, RATINGS and SCORING: Participating yachts will be rated in accordance with PHRF ratings assigned by the Detroit Regional Yacht Racing Association (DRYA). Yachts without a PHRF certificate issued by the DRYA may receive a rating by contacting DRYA at drya.org or calling DRYA at 586-778-1000 or accept a PHRF handicap assigned by the OA. The race will be scored Time-On-Time using the appropriate PHRF Rating.

JAM CLASS REQUIREMENTS: No spinnakers, staysails, double head rigs or oversize whisker poles are allowed.

RADIO MONITORING: Yachts shall monitor channel 72 while racing.

REQUIRED EQUIPMENT: Each entrant shall carry the following equipment while racing and shall be notified by the Race Committee if inspection is deemed necessary:

All United States Coast Guard required equipment.

Federally required navigation lights.

NOAA Chart #14850 (Lake St. Clair) or equivalent

An operating marine VHF transceiver with channels 9, 16, 22, & 72

Marine distress signals in waterproof containers including two (2) orange smoke and two (2) red launchable flares.

Life vests and safety harnesses for each person on board.

PERSONAL SAFETY: A USCG approved life vest with whistle attached **MUST** be worn by all persons on board while racing. It is recommended that a safety harness be worn and attached to the yacht while racing.

SPECIAL AIDS: The use of self-steering devices and electronic navigation aids (e.g. GPS) are permitted without penalty.

STARTING AND FINISHING LINES: The starting area is located at the LSSC "G" mark located at 42°28.5'N 82°51.0'W approximately 100 yards East of the Gaukler Point Shoal Buoy. All classes start and finish between the "RC" flag on the Committee boat and the LSSC "G" mark.

MARKS: Marks of the course are the Huron Point Buoy (42°33.2'N 82°44.9'W), the LSSC "N" mark 42°28.1'N 82°48.0'W, and the LSSC "G" mark (42°28.5'N 82°51.0'W). Mark locations are approximate.

COURSE – Marks to Starboard (Green Flag on Committee Boat) Sail from the starting line to the Huron Point Buoy, then to the LSSC N Mark, then to the finish between the start "G" Mark and the "RC" Flag on the Committee Boat. All rounding marks are to starboard. Course length-approximately 14.5Nm. (see 'Course Chart'). **Marks to Port (Red Flag on Committee Boat)** Sail from the starting line to the LSSC N Mark, then to the Huron Point Buoy, then to the finish between the start "G" Mark and the "RC" Flag on the Committee Boat. All rounding marks are to port. Course length-approximately 14.5Nm. (see 'Course Chart').

SHORTENING COURSE

A. Prior to the start, the Race Committee boat displaying a **Code Flag "A"**: Sail to and round the first mark, then directly back to the finish.

B. After the start, when a Race Committee boat, in the vicinity of a mark, displays **Code flag "S"**: Finish the race by sailing between the nearby course mark and the Race Committee boat displaying the "S" flag. The race committee may announce the shortened race by radio broadcast.

COMMITTEE BOAT PROTECTION MARK: There may be a protection mark (inflatable buoy, green) from the stern of the Committee Boat. If a yacht touches this limit mark, the committee boat, or passes between this mark and the Committee Boat, she shall have, in effect touched a mark.

RESTRICTED AREA: Yachts shall keep clear of the restricted area (a rectangular area approximately 200 feet back of the starting line) and of the first leg of the course before the starting signal of the class ahead. A yacht which has finished shall keep clear of the finishing line and all other yachts which have not finished.

INDIVIDUAL RECALLS: The Race Committee shall display an '**X**' **Flag** and may attempt to hail, or announce on **VHF channel 72**, the sail numbers of yachts subject to individual recall. Failure to transmit or receive such notification and the order in which recalls are announced will not be grounds for redress. This changes RRS 62.1(a).

PROTESTS: Submit a written protest in accordance with US Sailing Rules to the Race Committee within two hours of finishing. Protests will be heard at the GLYC clubhouse. The Race Committee will inform the parties of the time.

PENALTIES: Penalties for breaking rules of Part 2 (When Boats Meet) may be resolved per Rule 44 of the Racing Rules of Sailing. RRS 44.1 is changed so that the Two-Turns Penalty will be replaced by the One-Turn Penalty.

TIME LIMIT: There will be no time limit to finish this race. The Race Committee may not be on station to record finishing times after 1700hrs. Therefore, skippers finishing after 1700hrs are to record their own finishing time and report it to the Race Committee in person or by calling Jim Rapelje at 586 612.6758 or Paul Krietsch at 313.712.0137

WITHDRAWALS: Participants withdrawing from the race are required to notify the Race Committee via VHF radio (Channel 72) or telephone; Jim Rapelje at 586 612.6758 or Paul Krietsch at 313.712.0137 at their earliest opportunity.



INTERFERENCE WITH SHIPPING: When crossing the shipping channel, yachts are forbidden to interfere with major ships (Federal Law 89-764). Any yacht violating this injunction shall be subject to protest and disqualification. All participants are hereby notified that no restriction is placed on the use of the water by other parties. Participants shall adhere to U.S.C.G. Rule 18 which reads in part "(b) A sailing vessel underway shall keep out of the way of: (ii) a vessel restricted in her ability to maneuver."

AWARDS: Participants and guests are invited to GLYC following the race for a barbecue. Refreshments will commence at approximately 1700, dinner at 1800, and awards at 1900. The cost of the barbecue (for the participants) is included in the entry fee, and additional meals are available for non-participants (See entry form).

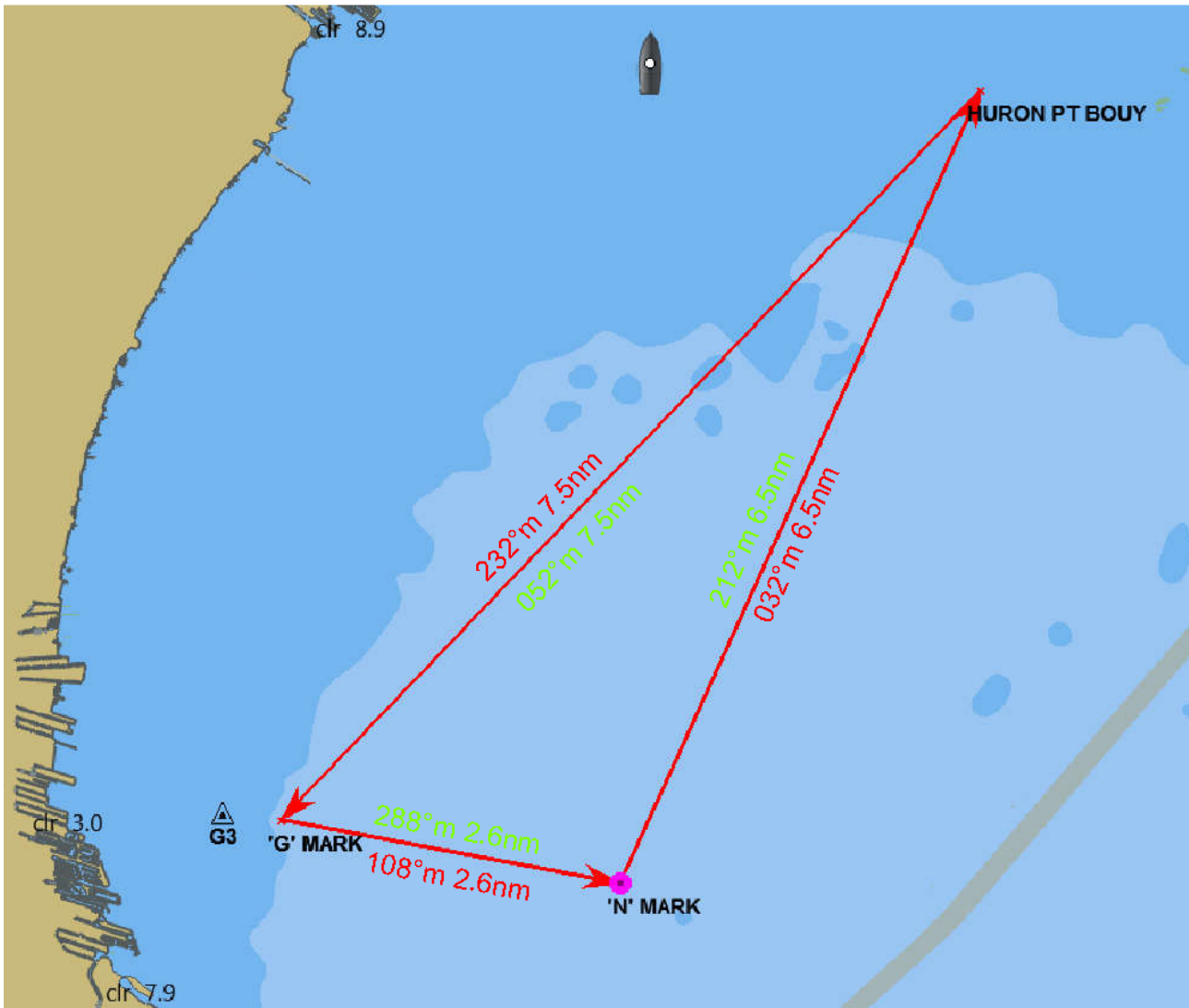
GENERAL INFORMATION: Copies of class splits will be available at GLYC on the Friday before the race. Should you have any questions, please contact the GLYC Race Chairman Jim Rapelje at 586 612.6758 or Paul Krietsch at 313.712.0137

AFTER RACING

Join us at Great Lakes Yacht Club
for a Steak and Chicken Barbeque (1700hrs)
(One dinner is included for each registered participant)
Additional dinners at \$20 per person are available,
See entry Application/Entry Form.
Refreshments will be available after the race BYOB.

"A"		"X"	
"AP"		"1"	
"C"		"2"	
"N"		"3"	
"M"		"4"	
"O"		Red	
"S"		Green	

**33rd ANNUAL 1+1 REGATTA &
31st ANNUAL SINGLE-HANDED REGATTA
Course Chart
(listed positions are approximate)**



APPROXIMATE MARK POSITIONS

START/FINISH 'G' MARK -	N. 42°28.5'	W. 082°51.0'
HURON POINT BOUY -	N. 42°33.2'	W. 082°44.9'
LSSC 'N' MARK -	N. 42°28.1'	W. 082°48.0'