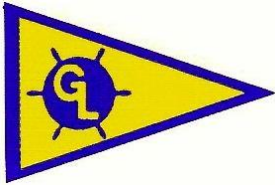
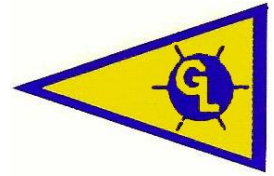


GREAT LAKES YACHT CLUB

proudly hosts the



GLYC NIGHT RACE



FRIDAY, June 26, 2020

GLYC FLAG OFFICERS

| | |
|----------------|-----------------|
| Commodore | Charles Fishman |
| Vice Commodore | Cindy Porter |
| Rear Commodore | Don Fiander |

RACE COMMITTEE

| | |
|--|-------------------|
| James Rapelje and Com. Paul Krietsch Co-Race Chairman | |
| Com. Barney Mathie | Com. Dave Parkes |
| Com. Frank Stellingwerf | Stephen Haley |
| Jeff Golding | Com. Mike McGuire |
| Werner Eckardt | |



Sailing Instructions

Sailing Instructions

RULES AND MANAGEMENT: Great Lakes Yacht Club (GLYC) is the Organizing Authority (OA) for the GLYC Night Race. This race will be governed by the DRYA 2020 NOR and Sailing Instructions and the rules as defined in the Racing Rules of Sailing for 2017-2020 (RRS), or as amended herein.

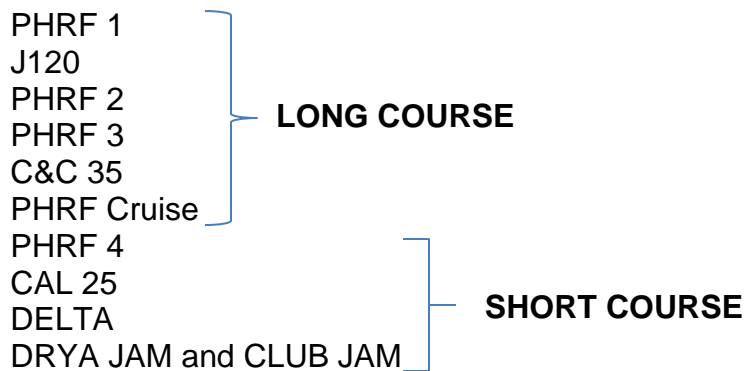
NOTICES TO COMPETITORS Notices to competitors will be posted on the GLYC web site www.greatlakesyc.com under "GLYC Night Race".

RADIO MONITORING – monitor channel 72 on your VHF Radio

CHANGES IN SAILING INSTRUCTIONS: Changes in sailing instructions will be posted on the GLYC web site www.greatlakesyc.com under "GLYC Night Race".

ENTRY: This Regatta is open to those registered for the 2020 DRYA Counter Series. It is also open to all other DRYA and non-DRYA members wanting to race in any of the classes except Delta. A request to be entered is necessary. Contact GLYC at 586.778.9510 or greatlakesyachtclub@gmail.com. The entry documentation must be submitted by midnight, Tuesday, June 23, 2020

SCHEDULE OF RACES & ORDER OF STARTS: The warning signal for the first class will be at 1930 hours. The Race Committee may make a series of short sound signals approximately one minute before the warning signal of the first class.



AGREEMENT TO ASSUME RISK: In consideration of being permitted to enter this regatta and being fully knowledgeable of the risks of sailing as a competitive sport, all contestants voluntarily assume all risk associated with participating in this event. It shall be the sole and inescapable responsibility of the skipper of the yacht to decide whether to start, to continue or finish the race. The skipper must assure that all safety equipment is properly maintained and stowed and know how to use same.

It is recommended that all participants follow Government regulations and guidelines that pertain to the **Covid-19** Pandemic.

STARTING AND FINISHING LINES: START LINE - All classes will start between the yellow mark and orange flag off the GPYC East Wall located in front of the New Marine Activities Building. Signal flags will be displayed from the GPYC Harbor Breakwater. Red shape marks to port, green shape marks to starboard. Course distance calculated at: "Long Course" 19.12 Nautical miles, "Short Course" 12.51 Nautical miles. **(See Course Diagram on Page 4)**

MARKS: Marks of the course are Mark "X" (N42°26.27' W82°51.80'); Lake Shore Sail Club (LSSC) "L" Mark (N42°29.810' W82°50.620'); Huron Point Buoy (42°33.2'N 82°44.9'W); LSSC "K" mark (N42°29.370' W82°47.700', and Channel buoy ("G21" FI G 4s). Mark locations are approximate.

COURSE – (see Course Chart and Finish Diagram on page 4).

SHORT COURSE (Marks to Starboard): Sail from the starting line to the LSSC “L” mark, then to the LSSC “K” Mark, then to the Channel Buoy “G21”, then to the “X” mark (Left to Port) then to the finish between the Finish Line Flag on the Harbor Breakwater and the Yellow start mark. Course length-approximately 12.84Nm.

SHORT COURSE (Marks to Port): Sail from the starting line to the Channel Buoy “G21”, then to the LSSC K Mark, then to the LSSC “L” Mark, then to the “X” mark (Left to Port), then to the finish between the Yellow Start Mark and the Finish Line Flag on the Harbor Breakwater. Course length-approximately 12.84Nm.

LONG COURSE (Marks to Starboard) Sail from the starting line to the LSSC “L” Mark, then to G 1PH (Huron Point Buoy), then to Channel Buoy G”21”, then to the “X” Mark (Left to Port), then to the finish between the Yellow Start Mark and the Finish Line Flag on the Harbor Breakwater. Course length-approximately 19.91Nm.

LONG COURSE (Marks to Port): Sail to Channel Buoy G”21”, then to G 1PH (Huron Point Buoy), then to the LSSC “L” Mark, then to the finish between the Yellow Start Mark and then to the “X” mark (Left to Port), the Finish Line Flag on the Harbor Breakwater. Course length-approximately 19.91Nm. (see Course Chart page 4).

CAUTION: On the course between the LSSC “L” Mark and the finish avoid the Gaukler Point Shoal marked by Buoy GR (FI (2+1) G 6s and Buoy G”1” FI G 4s

Note that LSSC Marks “K” and “L” may be lighted.

SHORTENING COURSE

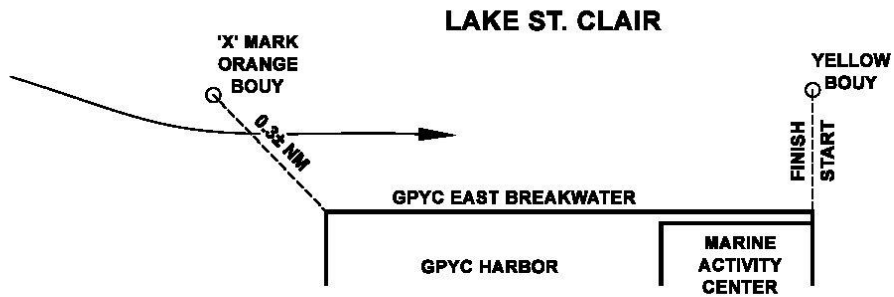
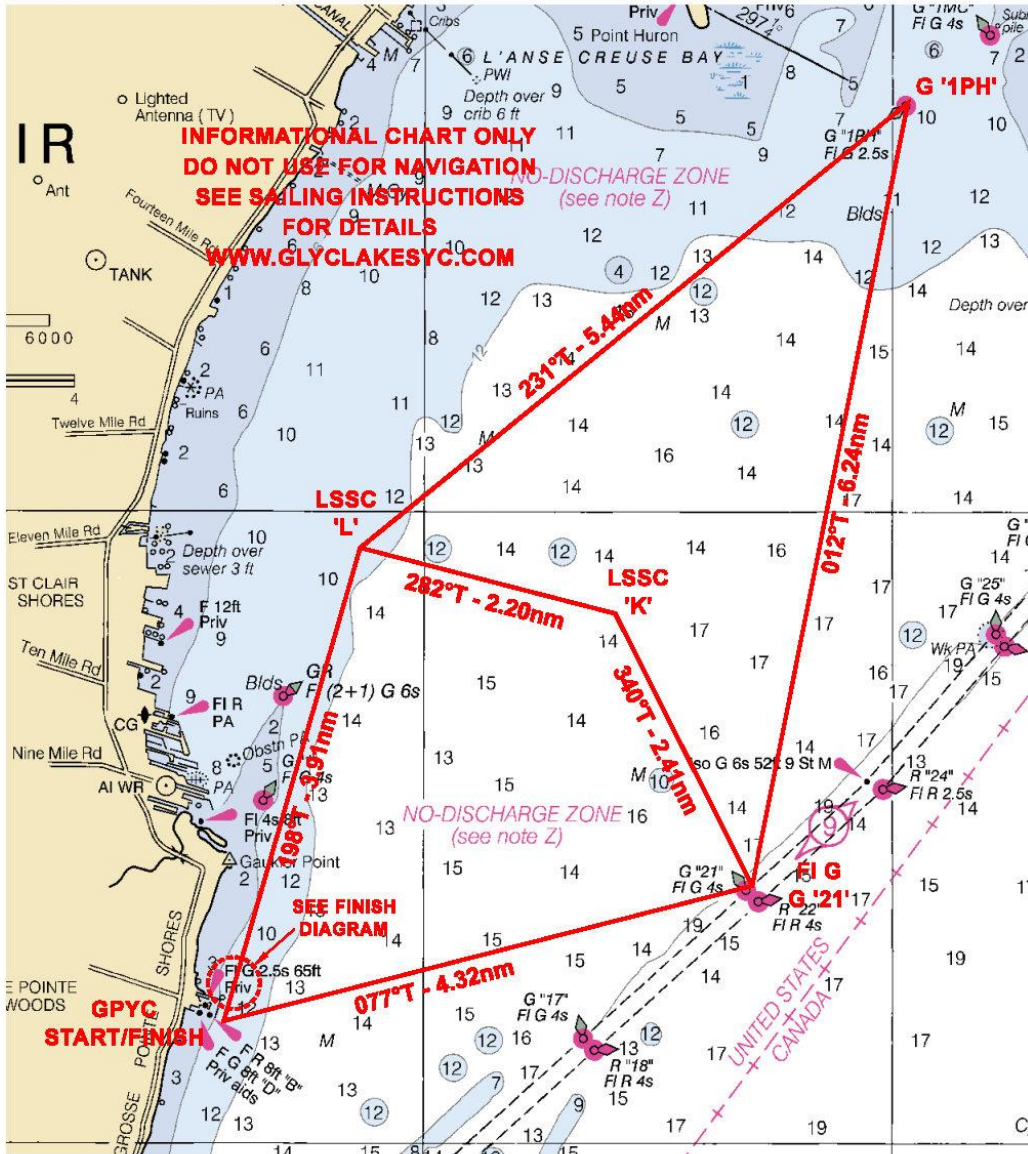
After the start, Racing Rules of Sailing 2017-2020, rule 32.2(a) shall apply. The Race Committee may announce the shortened course over VHF radio channel 72

FINISHING AND APPROACH -The “X” mark shall be taken to port by all classes in their final approach to the finish line. This applies to all shortened course situations as well. See (Finish Line Diagram) on page 4. Proceed downstream to cross the Finish Line between the Finish Line Flag on the GPYC Harbor Breakwater and the Yellow finishing mark.

INTERFERENCE WITH SHIPPING: When entering the shipping channel, yachts are forbidden from interfering with major ships (Federal Law 89-764). Any yacht violating this injunction shall be subject to protest and disqualification.

AWARDS: Results will be published on the Great Lakes YC web page as soon as possible after the race. www.greatlakesyc.com. Award flags will be sent out via US Mail.

GLYC 2020 Night Race Course Diagram



FINISH LINE DIAGRAM